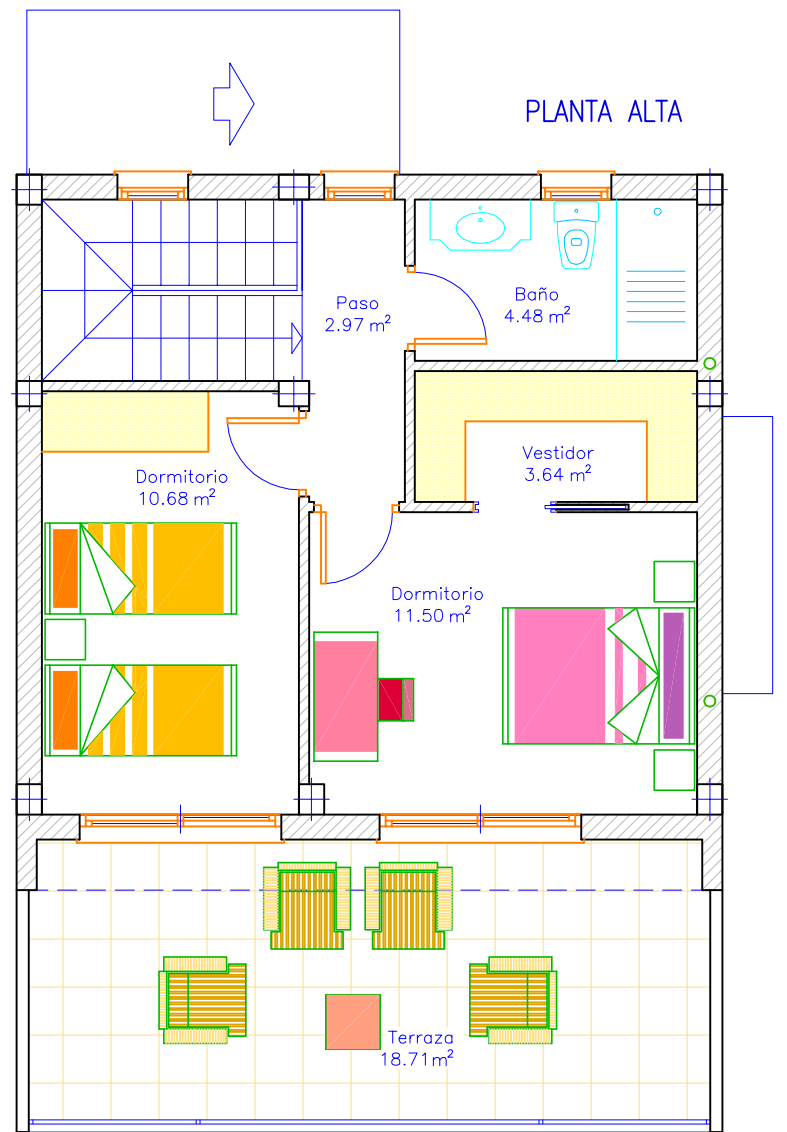
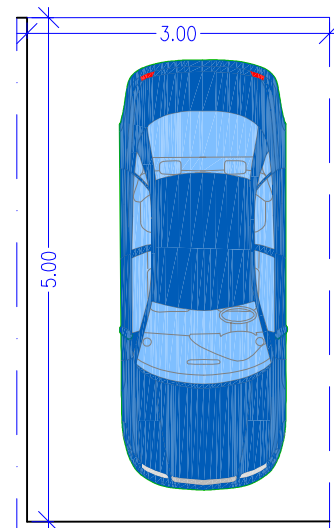


CALLE ALBERTO DURERO (PEATONAL)



CALLE JACOBO TINTORETO
APARCAMIENTO EN SUPERFICIE A10
SUP. = 15,00M2



VIVIENDA 10

Sup. parcela=181,00m²
 Sup. construida=114,70m²
 Sup. jardin=112,50m²
 Sup. terraza=18,71m²
 Sup. piscina=18,00m²
 Suma sup. disponible=219,96m²